



**The best under the sun.**

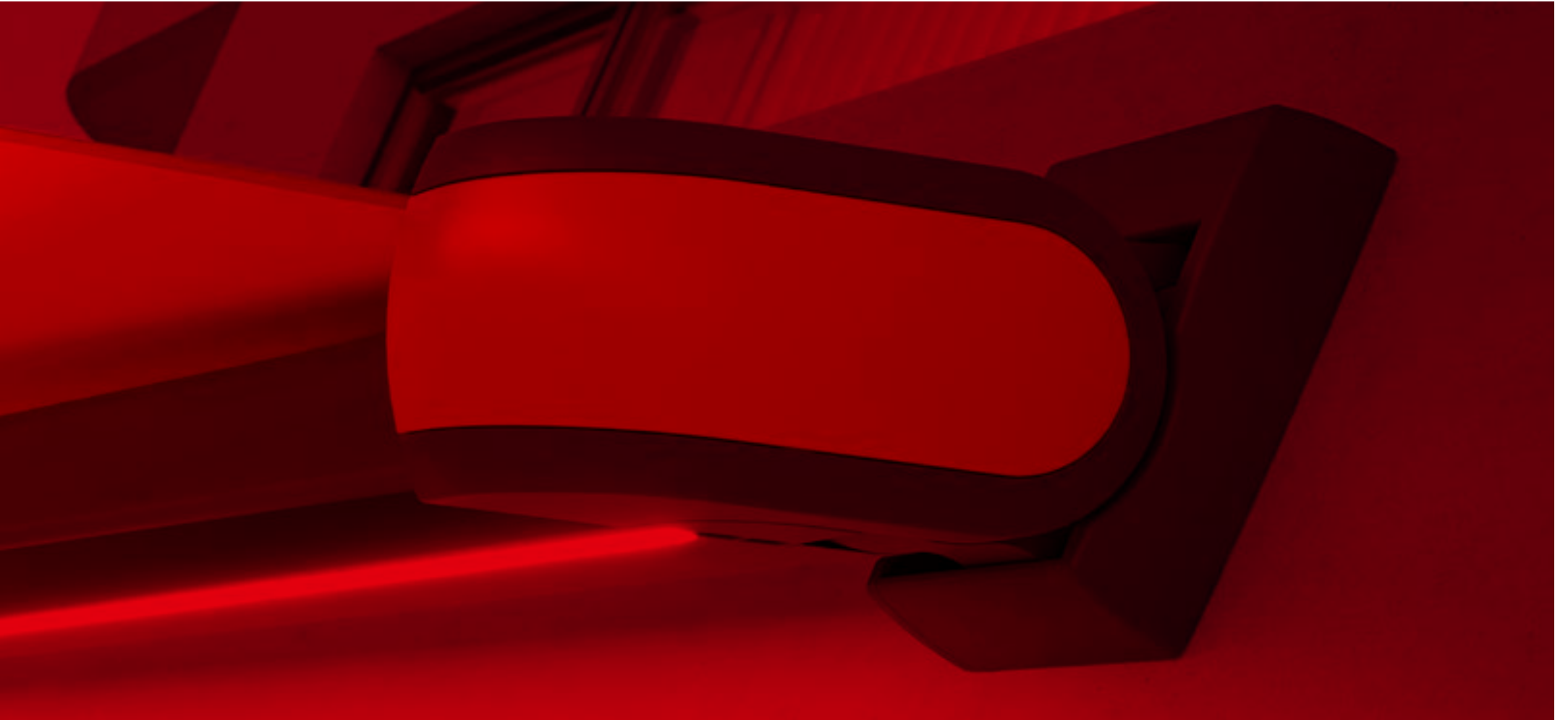
Create the most alluring shade in the world.

Designer awnings for patio and balcony

**markilux**<sup>®</sup>  
The best under the sun

A red-tinted photograph showing a hand holding a wooden beam. The background is dark with some foliage visible on the left. The text is overlaid in white.

Put only the best between you and the sun.  
Create the most alluring shade in the world.







We are the mark.  
There is always a clear  
line to our design.

#### Outdoor living

Relax and recuperate or spend precious moments with your family and friends outdoors. markilux designer awnings not only provide shade and protection on hot days, but they open up new opportunities to create a cozy ambiance long after the sun has set. In choosing a markilux designer awning, you are opting for the very best quality – “Made in Germany” – and for endless hours of light-hearted fun outdoors.

markilux designer awnings have received a multitude of awards:



| Brand



| Website



| For example the markilux MX-1



reddot design award  
winner 2015

# The essence of luxury “Made in Germany”.

## Quality, functionality and simplicity.

**Put only the best between you and the sun. Create the most alluring shade in the world.**

For nearly 50 years, markilux has been developing and making top-quality sun protection solutions. markilux designer awnings are known for their first class, multi-award-winning designs and innovative technology. The production of awnings and covers under one roof – is the essence of what markilux “Made in Germany” represent. markilux aims to make outdoor lifestyle comfortable, convenient and enjoyable turning your favorite spot outdoors into something extra special.



### **markilux quality**

High-grade materials and our comprehensive quality management system ensure that each awning will have a long service life. As a company, we are certified in compliance with DIN EN ISO 9001.



### **markilux functionality**

markilux combines innovative technologies and smart solutions to create high-end products. With the variety of accessories and operating methods available, you can enhance your markilux designer awning to suit your own requirements.



markilux®



**markilux design**

markilux designer awnings are the perfect combination of form and function embodied into shade. To achieve this, we rely on the long-term experience of our internal development team in cooperation with external designers.

Member of  **Rat für Formgebung**  
German Design Council

  
**german  
brand  
award  
19**  
product  
brand  
of the year



**markilux service**

The combination of a branded product, expert advice, and a professional installation makes for the most compelling solution. Qualified markilux specialist dealers provide professional advice, comprehensive services, and a personal point of contact in your area.



## Model

from page 10

### Design and function in perfect harmony

Every markilux awning combines design, quality, and technology into one unique solution. Within our large range of models, there are many possibilities of customization which can adapt to your personality and specific design aesthetic.



## Awning cover

from page 58

### Large range of colors and patterns

Our textile designers identify current trends in interior design, architecture and color and turn them into unique awning fabrics. With more than 250 patterns to choose from, markilux offers you an unparalleled selection.

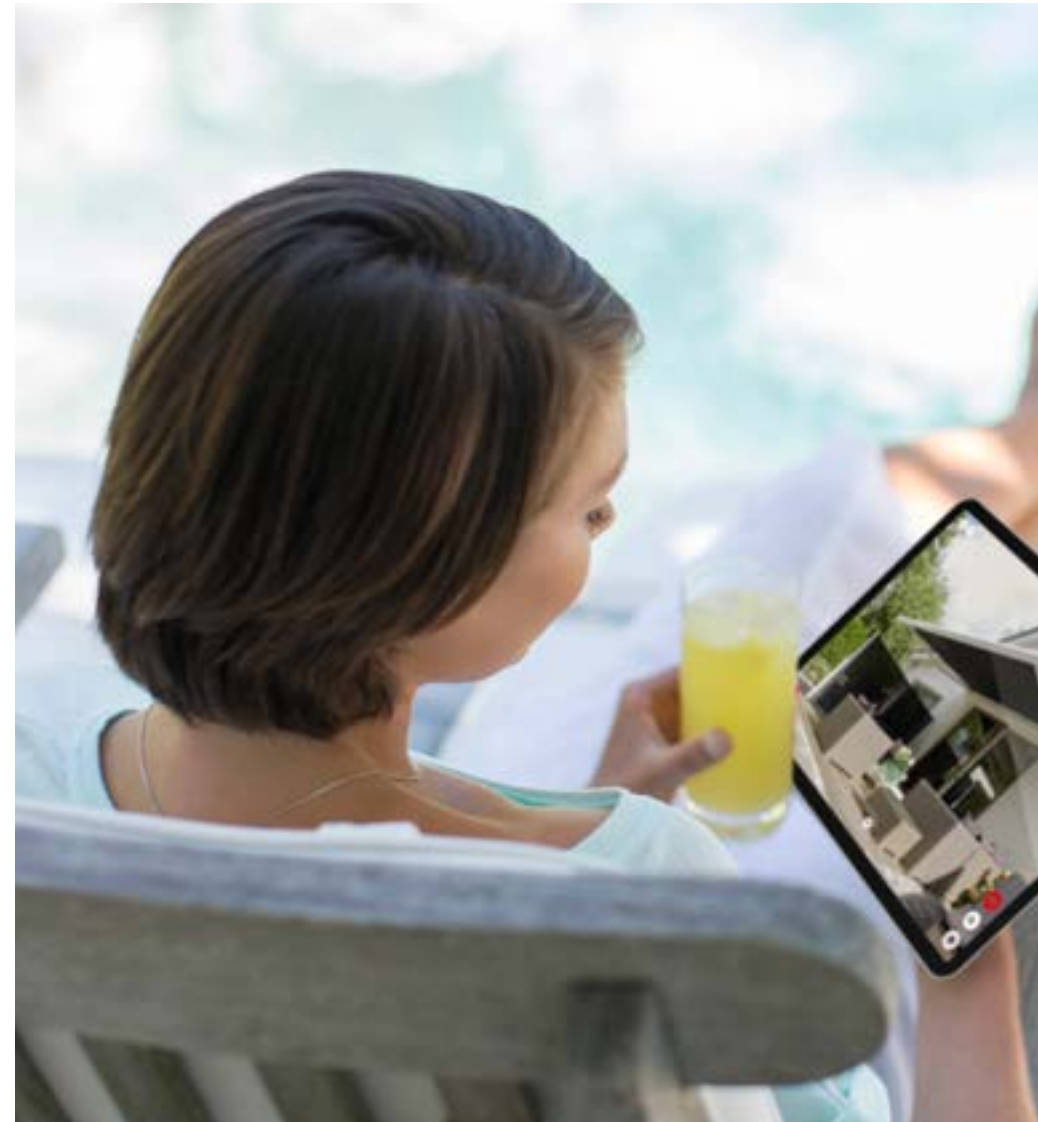


## Operation

from page 66

### Arm technology and options

Easy-to-use operating technology, optional lighting solutions and additional extras, such as wind sensors, mean that we can build a system to your desired specification and make being outdoors a pleasure even when the sun isn't shining.







## Customization at you fingertips. Explore the options.

### Visit our configuration tool or try our app to test your possibilities

Your markilux designer awning can be as unique as you are. With a choice of more than 45 models, 250 timeless fabric patterns and a wide range of accessories, you can design an awning to suit your every need.

With lighting options, wind sensors, smart control technology and other additional functions, markilux awnings can enhance your outdoor experience – at any time of day ... or night.

Your markilux specialist dealer will gladly assist you with their professional advice and suggestions when helping you configure your very own designer awning.



### markilux 3D | app

Configure your own personal dream awning, visualize it live on the walls of your own home and get to know many of the details and options in a virtual setting. Simply download it free of charge from the App or Google Play store.

# Everything in view. A perfect outlook.

## markilux cassette awnings



**MX\_1**

page 14



**MX\_1 compact**

page 16



**MX\_6000**

page 20

### markilux cassette awnings

When the awning is retracted, the cassette completely encapsulates the awning cover, hardware, and technology, thus providing the best possible protection against wind and weather.

### Semi-cassette

Part or all of the cover is not protected and susceptible to the elements. Perfect, particularly for use on patios and balconies not exposed to harsh weather conditions.



**MX\_5010**

page 22



**MX\_970**

page 24



**MX\_3**

page 26

### Wind protection and extra privacy

Protection against the low sun rays at the side or the front, light wind, and prying eyes.

### Awning systems

Outdoor sun protection for Large open areas which awnings cannot be attached to the building for structural reasons.



**MX\_990**

page 30



**MX\_3300**

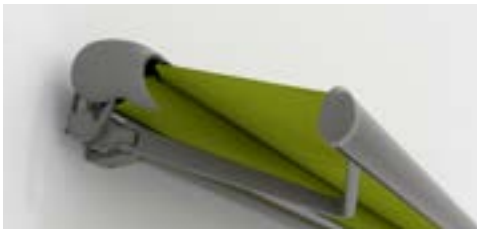
page 32

Awning covers and frame colors ..... from page 58

Operation, options and extras ..... from page 66

Technical data ..... from page 72

markilux semi-cassette awnings



MX\_1600

page 36

markilux products providing wind protection and extra privacy



MX\_format

page 38



MX\_790

page 40

markilux awning systems



MX\_pergola

page 44



MX\_pergola compact

page 46



MX\_planet

page 50



MX\_markant

page 52



MX\_syncra

page 54



MX\_construct

page 56

A red-tinted photograph of a modern building's overhanging roof structure. The image shows a series of horizontal, cantilevered roof sections that create a sense of depth and architectural complexity. The background is a blurred view of trees and a building facade, all rendered in shades of red.

Design is the art  
of merging function  
with beauty.



Cassette awnings



#### LED Spots in the canopy

Evening is the time for those little highlights.  
 In the markilux MX-1 they can point both up and down.  
 Discover lighting and design options on page 18.



reddot design award  
 winner 2015

#### The markilux shadeplus

At the touch of a button, an additional vertical dropshade in the front profile protects against low-lying sun and prying eyes.

MX\_1



**Cassette awning**

max. 275" × 172" / 700 × 437 cm,  
cassette depth approx. 24" / 62 cm

**Arm technology**

Bionic tendon

**Options**

shadeplus / drop valance  
and a broad range of light  
and color options,  
page 18



Quality has its merits.  
Usually the very best ones.

**markilux MX-1**

Even at first glance, the markilux MX-1 makes an immediate impact with its unique mix of shape and functionality. Retracted, the tapered futuristic full cassette with a depth of 24" makes a big impression on the observer as a canopy that protects your awning from the effects of the weather. When extended it shows its true magnitude. This designer awning is a pioneer due to the numerous technological innovations it incorporates and its multi-award-winning design. The markilux MX-1 creates an unparalleled atmosphere at any time of the day, which will charm you again and again, today and in the future.

# Delivering beautiful protection, any time of year.

## markilux MX-1 compact

The petite markilux MX-1 with all the technological innovations and with the variety of features typical of markilux. It also offers you spectacular ambient lighting, brilliant LED options in the cassette and front profile as well as every option to influence the color design. The markilux MX-1 compact makes your favorite spot in the garden particularly enticing. It enhances the appearance of a building with its modern, minimalist architectural design.



## LED Spots in the underside of the cassette

The MX-1 compact provides beautiful protection  
– and the perfect focus in the evening.



## mx\_1 compact



**Cassette awning**  
max. 275" × 163" / 700 × 415 cm,  
cassette depth approx. 14" / 38 cm

**Arm technology**  
Bionic tendon

**Options**  
shadeplus / drop valance  
and a broad range of light  
and color options,  
page 18

### A personal statement on any façade

The markilux MX-1 compact, with a cassette depth of 14" is an eye-catcher and sun protection in one.

mx\_1 | mx\_1 compact Options



**Color combinations**

Cassette and front panel are available in different colors, which can be combined freely.



**LED Line in the front profile**

Gives uniform lighting and a pleasant ambience after sunset.



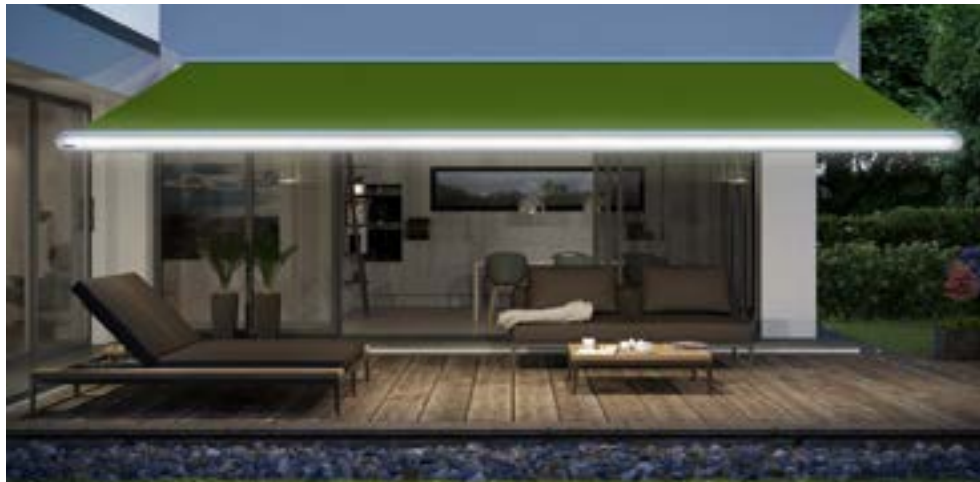
**LED Spots in the front profile**

This brilliant lighting effect converts the room under the awning into an oasis of well-being in the evening.



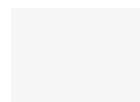
**LED Spots in the cassette / canopy**

Highlight specific areas and allow you to enjoy a pleasant evening under the awning.



**LED ambient lighting**

An impressive eye-catcher in the evening hours. The front profile is available in five contrasting colors and can be illuminated with dimmable lighting.



traffic white



light ivory



yellow



red



green



**The markilux shadeplus**

At just the touch of a button, the optional protection from glare and prying eyes creates an unparalleled, private room outdoors. As a standard, the shadeplus is equipped with a radio-controlled motor and comes supplied with a markilux remote control.

**Cassette awning**

max. 275" x 157" / 700 x 400 cm

**Arm technology**

Bionic tendon

**Options**

LED spotlights in the front profile,  
end cap insert in stainless steel mesh,  
end cap trim in polished chrome,  
shadeplus/drop valance,  
valance,  
coupled awning



reddot design award  
winner 2006

**LED Spots in the front profile**

More than a decorative highlight. The markilux 6000 lights up your favorite spot in an elegant, flexible and energy-efficient manner, just the way you want it.

MX\_6000



#### The markilux shadeplus

The vertical shading in the front profile adds the finishing touch and provides protection from the sun and prying eyes. On request with a hard-wired / radio-controlled motor.



#### Various decorative elements

Whether you choose the end cap insert in stainless steel mesh, the end cap trim and frame in a chrome finish or all deliberately uniform in the awning color of your choice – you can design your very own personalized top model by markilux.

## No false modesty: Germany's top model.

#### markilux 6000

A designer awning with many faces – each one more beautiful than the next. Create your own personal and unique model from a wide range of awning frame colors, decorative elements and available accessories. With its remarkable dimensions and technical specification, the markilux 6000 makes a lasting impression. It also cuts a dashing figure as well. Invite Germany's top model into your home.

**Cassette awning**

max. 275" × 157" / 700 × 400 cm

**Arm technology**

Bionic tendon

**Options**

polished chrome fittings,  
shadeplus/drop valance,  
valance,  
coupled awning



MX\_5010

## Here's to getting together, whatever the weather.

### markilux 5010

The markilux 5010 can be effortlessly extended, either at the touch of a button or integrated into a smart control system and will be a hit with all the family. This awning has the ability to span large widths as a coupled unit with up to three awnings installed next to one another, friends and guests will also be able to find a cozy spot in the generous shade. This all-rounder encourages relaxed get-togethers and turns any hour spent outdoors into a happy one.



### Polished chrome fittings

Optionally available as an eye-catcher: the chrome-plated end caps fitted to the front profile. On request, with a wall sealing profile which drains rain away over the front of the awning.



### The markilux shadeplus

Enjoy relaxing on the patio even when the sun is low in the sky.

# For everyone who loves all-round beauty.

## markilux 970

The markilux 970 exudes the urban lifestyle with confidence. Its neat and slim appearance makes it the ideal model for those who love the simplicity of elegance. Lighting, numerous styling options and the varying front panel finishes lend that individual something to the markilux 970. All in all – simply because of its clean lines and straightforward design – this awning is an all round performer.



### Variety in design

The colors of the cassette and front panel can be freely combined. There are three additional anodized, accentuated colors available for the front profile: silver, bronze and black.



### The markilux shadeplus

For more protection from prying eyes and glare: the optional vertical blind will captivate you.



### LED lighting

LED Spots attached to or LED Line in the cassette make for a stylish ambience at dusk and during the evening.





# mx\_970



## Cassette awning

max. 236" × 118" / 600 × 300 cm

max. 196" × 137" / 500 × 350 cm

## Arm technology

Bionic tendon

## Options

LED Line in the cassette,  
LED Spots below the cassette,  
choose your own color combination,  
colored front panels,  
shadeplus/drop valance



### Cassette awning

max. 236" × 118" / 600 × 300 cm

max. 196" × 137" / 500 × 350 cm

### Arm technology

Bionic tendon

### Options

LED Line in the cassette,  
LED Spots under the cassette,  
choose your own color combination,  
colored styling panel  
and end cap insert,  
page 28



GERMAN  
DESIGN  
AWARD  
WINNER  
2020



INNOVATIVE  
ARCHITECTURE  
best of best

MX\_3

## The awning with both: elegant curves and clean lines.

### markilux MX-3

Shapely curves, clean lines, a fascinating color spectrum – these are the defining features of the markilux MX-3. The color choice of the all-round styling panel offers a unique customization option and makes the hearts of patio and balcony owners beat faster. When closed, the awning makes a neat and smart impression with its harmonious appearance, and when opened it fully reveals its technical superiority.



### Clean lines. All round.

If you like shapely curves in combination with a straightforward design, you will love the markilux MX-3.

### The new light in the awning sky

The best spot under the sun – even in the evening.  
Ideal for the most enjoyable hours outdoors.

Our special architecture edition



Sunshine yellow RAL 1016 | 5215 | 32471 \*



Red orange RAL 2001 | 5229 | 30912 \*

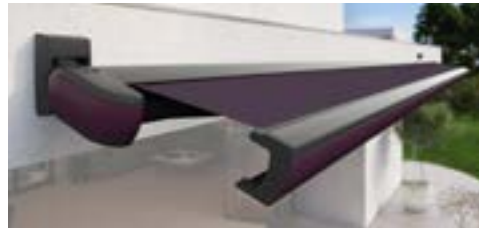


Traffic red RAL 3020 | 5204 | 31003 \*

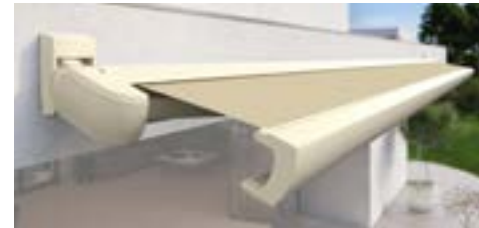
© RAL Bonn 2020



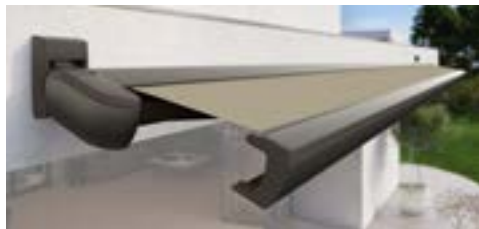
Yellow green RAL 6018 | 5204 | 32506 \*



Purple violet RAL 4007 | 5204 | 31054 \*



Pearl white RAL 1013 | 5233 | 30937 \*



Pearl mouse grey RAL 7048 | 5229 | 31487 \*



Agate grey RAL 7038 | 5215 | 31592 \*

**Color and satisfaction unlimited**

The markilux MX-3 takes the changing times into account. Not only with its trend-setting design but in particular with the option of personalizing the color. The standard markilux awning frame colors – and eight additional accentuated colors for the all-round styling panel – can be combined at will without surcharge and are available with a recommended, color-coordinated awning cover on request. For even more individuality, the frame color and cover can be selected from their respective RAL color swatches.

\* Front panel | Frame color | Cover pattern



## mx<sub>3</sub> Options



### Perfection. All round.

Whether by way of ambient lighting provided by an LED Line or accentuated via directional LED Spots – all the outstanding highlights can be found in the show-room of your specialist dealer and at [markilux.us](http://markilux.us)

# Creates a carefree ambience.

## markilux 990

Small, but impressive! You will be surprised how much technological sophistication there is in this app. 5" high cassette. The folding arms and awning cover disappear into its compact construction with the U-shaped front profile. An impressive angle of pitch of up to 70 degrees when top fixing make this awning best suited for smaller patios and balconies. Thanks to these advantages you can easily spend many hours relaxing in the most beautiful shade.



### End cap insert in polished chrome

That little something extra for your markilux 990.



### Wall sealing profile

The slim aluminum profile in the same color as the awning closes the gap between the awning and the wall, allowing rain to be discreetly drained off the awning.



MX\_990



**Cassette awning**

max. 196" × 118" / 500 × 300 cm

**Arm technology**

Bionic tendon

**Options**

end cap insert in polished chrome,  
valance

**Cassette awning**

max. 275" × 157" / 700 × 400 cm

**Arm technology**

Bionic tendon

**Options**

valance,  
coupled awning



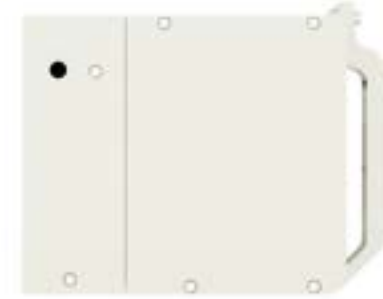


MX\_3300



**Angular design**

Precise recess installation will make the markilux 3300 blend perfectly into its structural surroundings.



**High impact.**  
**Low maintenance.**

**markilux 3300**

Can an awning be merged visually into the architecture of a house or building? The markilux 3300 proves that it can. Depending on the structural situation, this designer awning, with its smooth front profile, disappears completely into a wall or precisely into a recess. When extended, it comes into its own with dimensions of up to 275" × 157". And you can shade even larger areas by coupling up to three single awnings together. Discover how practical the markilux 3300 can be, and make this awning a big hit in your home or building.



Save the effort  
with good technology  
More time. More life.



Semi-cassettes | Wind protection and extra privacy

# One of the most beautiful. Far and wide.

## markilux 1600

This awning won the IF product design award for its harmonious, semi-circular design. And still looks unique when it's fully extended. As a semi-cassette awning, the markilux 1600 is open at the bottom. The top cover profile adapts itself to the angle of pitch of the awning and closes completely flush with the front profile when retracted, which protects the cover safely from rain.

Take a look round your neighborhood: your awning is probably the most beautiful far and wide.



### Polished chrome fittings

Give extra dash to the design language of your markilux 1600 – on the front profile and support tube.



### The markilux shadeplus

Simply block out low-lying sun and prying eyes with the additional vertical blind in the front profile of the markilux 1600.



## MX\_1600



### Semi-cassette awning

max. 279" × 157" / 710 × 400 cm

### Arm technology

Bionic tendon

### Options

LED spotlights in the front profile,  
end caps in polished chrome,  
shadeplus/drop valance,  
valance,  
coupled awning,  
stretch



### Lighting options

The LED Spots in the front profile can be dimmed and pivoted guaranteeing a pleasant atmosphere in the evening.



**Patio demarcation**

Wind protection and increased privacy for your outdoor area giving a cozy feel in a textile atmosphere.



**Solitary statement**

Ensuring privacy outdoors. The possibilities have never been more diverse, privacy never more beautiful.



**Framed in. No limits. Versatile.**

The patented tensioning system keeps the cover perfectly taut. Individual frames can be extended without limitation and, if desired, are movable as sliding sections within the awning system.



mx\_format



**Wind protection and extra privacy**

individual unit: max. 118" × 98" / 300 × 250 cm,  
can be coupled without limitation,  
sliding sections, max. 51" × 98" / 130 × 250 cm

**Options**

triangular solutions  
for markilux awning systems,  
slide version,  
panoramic window

**Awning system module**

Vertical protection, perfectly tailored to markilux awning systems, on request possible as a slide version with movable sections and panoramic window.

Life has a lot of nice sides to it.  
**And now so does your patio.**

**markilux format**

You can put up dividers to shield yourself from prying eyes – or you can create your very own personal space in the open air with its own textile coziness. The markilux format puts a world of possibilities at your fingertips – and more than 250 fabric patterns at your disposal.



# The elegant way to show neighbors where privacy begins.

## markilux 790

There are few seating areas outdoors that are protected on all sides from sun, wind and prying eyes. Therefore, this slim markilux side screen simply makes your life on balcony or patio more comfortable and enticing. It can be extended in one smooth movement and is always by your side when you need it and feel like making use of its benefits.

### Side screen

extension: max. 177" / 450 cm

height: 35" – 98" / 90 – 250 cm

### Options

sloping top edge,

mobilfix

(up to a height of 83" / 213 cm),

a broad range of fixture options



### Angled top edge

The cover is available with a angled top edge which can be adapted to the pitch of your markilux awning. It creates a beautiful, enclosed and protected area free from prying eyes and the glare of the sun.





MX\_790



**mobilfix**

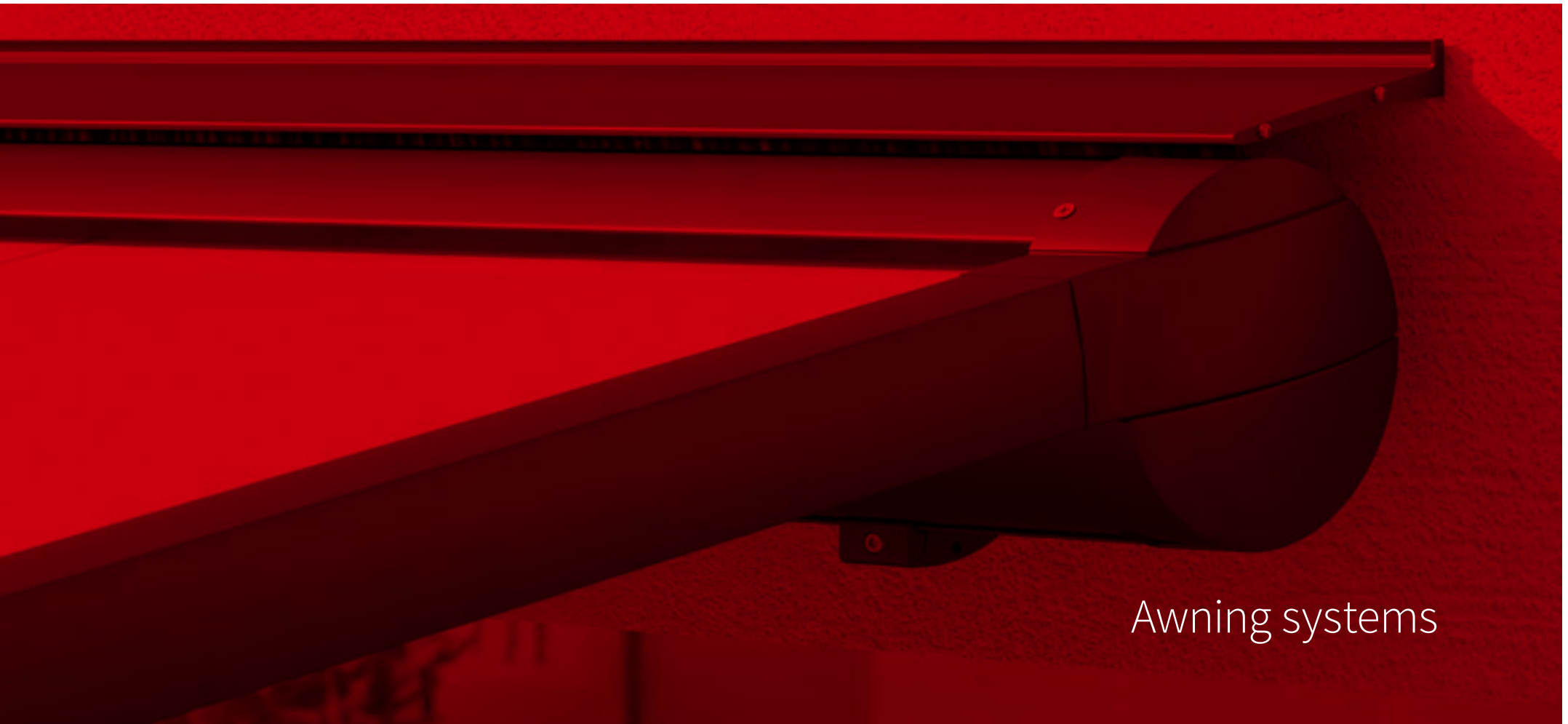
The moving support post with granite base plate stands secure, wherever you want it to.



**A broad range of fixture options**

markilux offers you the perfect means of installation for every situation.

The right solution whatever the challenge.  
Make use of high-grade products.



Awning systems

#### Awning system

max. 236" × 177" / 600 × 450 cm

max. 196" × 236" / 500 × 600 cm

#### Options

shadeplus/drop valance,  
protection against wind and  
prying eyes as well as a number  
of comfort and design options,  
page 48



#### The markilux shadeplus

The additional vertical shade integrated into the front profile simply blocks out low-lying sun and the glances of inquisitive neighbors.

## Big plans, we got you covered.

### markilux pergola

The markilux pergola ranks top when it comes to solar and wet weather protection. The awning system on slender posts and lateral guide tracks provides generous shading with an extension of up to 236". The markilux pergola defies wind and weather up to Beaufort wind force 6 (wind resistance class 3). You can make your favorite place outdoors your very own with a markilux shadeplus, as well as a multitude of lighting options and post variations. No matter how strong the sun shines or the wind blows, with your markilux pergola you can enjoy life outdoors at any time.



### Coupled awning

For all those who want even more shade:  
up to five single markilux pergola units can be joined side by side.



### Closed full cassette system

The cover disappears completely inside the cassette and is ideally protected. If anything can be even more impressive than the appearance of the awning, it is the way the markilux pergola functions faultlessly.



### markilux tracfix

One of markilux's many sophisticated features: the lateral cover guidance system that leaves no gap between the cover and guide track. Combines a more attractive overall appearance with better wind stability.



**The markilux shadeplus**

Blocks out glare from the sun and prying eyes in an instant.



**An “all-round” achievement**

The square, compact cassette protects the awning cover all round.





## Slim Fit. Dependable Protection.

### markilux pergola compact

The pergola compact unites the graceful shape of the classic pergola with state-of-the-art product design and sophisticated technology. This compact, space-saving awning system on slender support posts and with lateral guide tracks, which always keep the cover taut, is ideal for smaller patios. The pergola compact invites you to linger and relax. Attractive and functional solar protection. Anywhere. For anyone.



#### Awning system

max. 177" × 157" / 450 × 400 cm

#### Options

shadeplus / drop valance, protection against wind and prying eyes as well as a number of comfort and design options, page 48



GERMAN  
DESIGN  
AWARD  
WINNER  
2018



reddot design award  
winner 2017

#### Always in the best light

Highlight your patio with LED Spots attached to the cassette or LED Line in the cassette, on the guide tracks or in the light bar which will guarantee endless hours of pleasure outdoors – even long after the sun has set.



#### markilux sundrive

An integrated solar module can drive the shadeplus motor in the markilux pergola. When the awning is extended, the front profile and the guide tracks finish perfectly flush with one another.

#### Adjustable post

For better water drainage, the front post of the markilux pergola can be lowered in a flash between 20 and 40 cm depending on the size.

#### LED Line

Light for reading or informal get-togethers, optionally in the guide tracks and /or in the light bar, turns your night into day.



#### Square posts

As an alternative to round posts, square ones fulfil the desire for clean straight lines.

#### Stabilization boxes

Give your markilux pergola reliable stability when fitting the front posts to footings is not possible or desired.

#### Stainless steel crank handle

Set the adjustable posts at the desired height in no time at all.

#### LED Spots attached to the light bar

These spotlights will provide perfect contrast lighting in the evening hours. Pivoting and dimmable.





**The markilux shadeplus**

The vertical protection against sun and prying eyes – up to 90" in height – creates a private room outdoors with its own special ambiance.

**Awning system**

depends on the awning model  
max. 236" / 240" × 118"  
max. 196" / 200" × 137"  
(max. 500 / 510 × 350 cm  
max. 600 / 610 × 300 cm)

**Arm technology**

depends on the model

**Options**

depends on the awning model,  
flex rotates up to 335 degrees



**flex option**

The markilux planet flex can be rotated and positioned wherever you need shading – by up to 335 degrees with the Easy-Go lever.



## Always revolving around your requirements.

### markilux planet

The markilux planet is a sail and awning in one. It's an eye-catcher that provides perfect shading for your room outdoors. This awning umbrella- like system protects you from UV radiation with exceptional reliability; it's extremely sturdy, yet mobile. With the Easy-Go lever with a flex option, you can simply rotate it by up to 335 degrees – so you can have shade wherever it is required. The slim post carries the selected markilux designer awning with ease and the combination of functionality and design is impressive. The markilux planet is further proof that, at markilux, everything revolves around your requirements.



### The markilux shadeplus

This versatile protection against low-lying sun, inquisitive glances and glare integrated into the front profile allows you to enjoy the late afternoon sun without having to worry about prying eyes.



### Awning system

max. post separation up to 236" × 236" / 600 × 600 cm  
with two independently functioning awnings,  
as a 1 field unit up to 118" × 236" / 300 × 600 cm,  
overall height 102" / 260 cm,  
other heights are possible

### Options

LED lighting,  
connection to a wall at the rear,  
vertical cassette roller blinds,  
lateral wind protection and extra privacy,  
panoramic window



### On request – that little bit more

Atmosphere-creating lighting with LED Spots or Line:  
the markilux markant fulfills all your wishes as far as  
the creation of an outdoor oasis of relaxation goes.



### Versatile in both form and function

As stand-alone unit or integrated into the existing architecture, the markilux markant makes a big impression in any situation.  
Detailed information is available from your markilux specialist dealer or at [markilux.us](https://www.markilux.us)



## The show must go on. Enjoy the soothing sounds of the rain under your awning.

### markilux markant

The free-standing awning system markilux markant is protection against sun, wind and rain, that can be tailored to your precise requirements. This awning is equipped with integrated water drainage system which protects and makes it possible to create the pleasant color ambience you have in mind. The markant offers protection, security, freedom, an outstanding appearance and comfort in a purist design.



### Your very own personal space in the open air

If you integrate vertical roller shades and protection against wind and rain into the markilux markant, you can create your own room out in the open air.



#### **markilux syncra uno**

Two feet. One awning. No problem.

The markilux syncra uno proves itself a stable base even with just one "wing".



#### **markilux syncra pergola**

With the additional posts at the front and the tracfix lateral cover guidance system, this option offers particular advantages in terms of size and wind stability.



#### **Detailed information**

Detailed information about the markilux syncra is available from your markilux specialist dealer and at [markilux.us](https://www.markilux.us)



**Awning system**

depending on the model up to 645 sq. ft.,  
as a coupled unit even larger

**Arm technology**

depends on the model

**Options**

depending on the awning model,  
uno (only one awning/pergola),  
flex (with stabilization boxes),  
round or square posts,  
lighting,  
base plate covers,  
coupled awning



**markilux syncra flex**

The stabilization boxes allow installation  
without concrete foundations on site.

## Allow them to stand on their own two feet.

**markilux syncra**

Generous shading right where you need it. That is the promise made by the markilux syncra. And one it keeps. As a single unit it will provide shade for up to 645 sq.ft.; as a coupled awning even larger areas are no problem.

This free-standing awning support system literally stands on its own two feet: two round or square posts and a massive cross beam ensure reliable stability. Depending on the requirement, one or two folding arm awnings or markilux pergolas can be attached to it. This awning system is either firmly anchored to the ground (“fix”) or installed using stabilization boxes (“flex”).

No matter which variation you choose,  
you can count on the markilux syncra.

# When you need just a little bit more.

## markilux construct

Situations can arise in which a standard model is not enough to meet your particular requirements. On just such occasions, system solutions are required. The awning system markilux construct is extremely versatile and flexible. Different modules are combined with different awning systems to create a veritable awning landscape. You don't have to make any compromises when it comes to size. You can choose between round and square posts and the range of available accessories is impressive. It is almost impossible to describe the markilux construct: you simply have to experience it yourself.

### Awning system

limitless possibilities with the modular and flexible frame system

### Options

depending on the awning model, vertical cassette roller shades, wind protection and extra privacy at the front and the sides, panoramic window, round or square posts, lighting, base plate covers



### Designer awnings to your own exact specification


Different conservatory and folding-arm awnings are possible and can be combined with vertical roller shades or side screens according to your precise wishes.





Detailed information

Talk to your markilux specialist dealer or allow yourself to be inspired at [markilux.us](https://www.markilux.us)



Exquisite fabrics  
in the most beautiful of shades.



Awning covers | Frame colors



**sunsilk**

Brilliant vividness. Silky smooth surface.  
Unique luminosity.



**sunvas**

Soft glow. Textile-like to the touch.  
Textile character and natural appearance.



**specials**

Semi-transparent, heat-reflecting, permeable,  
highly water resistant and flame-retardant covers.



**markilux visutex collection 50/4/me**

Inspiration drawn from fashion, architecture, color and naturally occurring special effects. 50 innovative fabrics conjure up your very own awning heaven in the tried and tested qualities sunsilk and sunvas – available exclusively from markilux.

# markilux awning covers.

The most beautiful fabric between heaven and earth.

## Our unique covers help to create a special ambience

The color and quality of the awning fabric are what turn the ambience on your patio into something special. Depending on the brightness and hue, color distinction, patterns and textures succeed in creating the desired effect. As a leading manufacturer of high-grade awning covers with 100 years of experience in the design and production of textiles, markilux offers an unparalleled variety. The markilux textile design team is constantly developing new patterns in line with the latest trends, which are nevertheless characterized by their timeless appeal. Among the more than 250 patterns in thematically coordinated color families, you are certain to find your very own and most beautiful fabric between heaven and earth.



## markilux awning cover finder

The most beautiful fabric for your designer awning can be found amongst the more than 250 cover patterns at the showroom of your markilux specialist dealer and at [markilux.us](https://www.markilux.us)

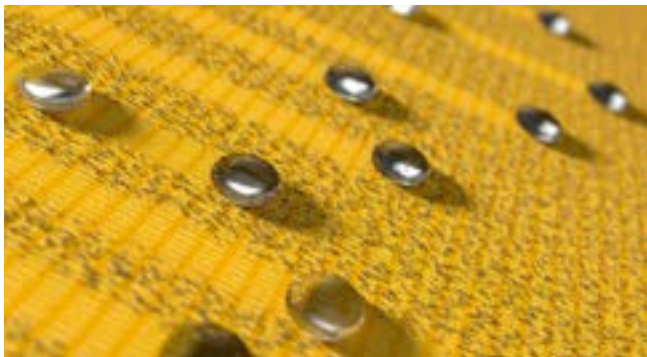




### Functionality can be so beautiful

During the production of our awning fabrics, we leave nothing to chance. We add a final finishing flourish to the fabric with a special formula developed in house. This finish gives our awning covers incredible longevity and resistance to rain, light and fluctuations in temperature. Certified in accordance with Oeko-Tex standard 100, markilux awning covers are guaranteed free from harmful dyes and chemicals.

With an Ultraviolet Protection Factor (UPF) of 50+, all solid markilux awning covers made from sunsilk or sunvas offer the highest possible degree of UV protection for fabrics. Your skin's own protection factor is enhanced by a factor of more than 50. This allows you to enjoy sunny days for longer, without risk.



#### Self-cleaning effect

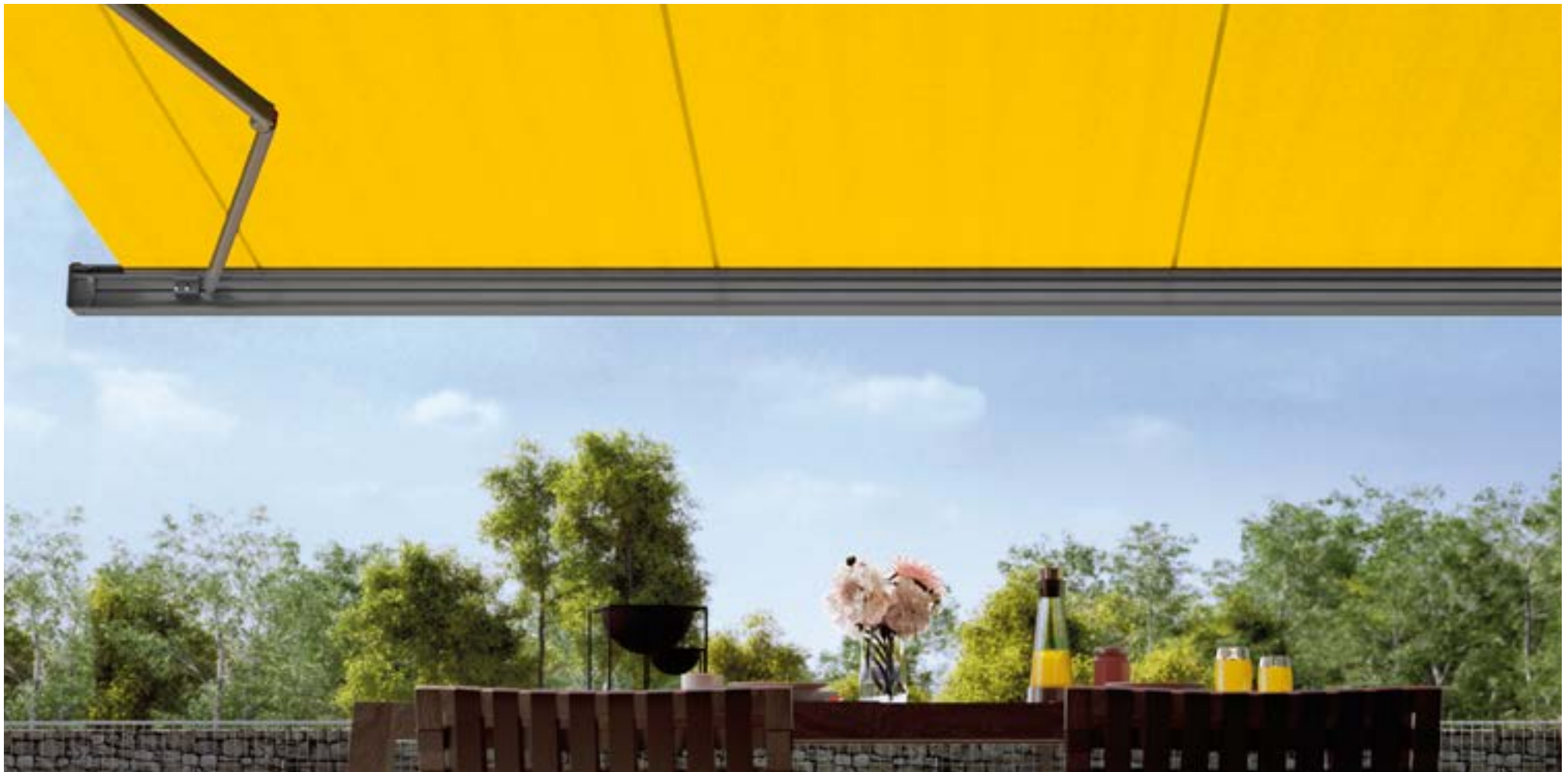
Water droplets pick up dirt particles and run off the awning cover taking the dirt with them (the awning must be set at a pitch of at least 14 degrees), ensuring you can enjoy your beautiful fabric for a long time to come.

#### Bonded awning covers

Panel joints bonded together ultrasonically ensure a consistent, unobtrusive appearance. The excellent resistance to water, light and fluctuations in temperature ensures that the service life of the cover is extended substantially.

#### Light and weather resistance and resistance to fading

High-tech yarns dyed right to the core and a high-grade finish developed in house guarantee the most stunning shade in which to relax.



**The most beautiful fabric between heaven and earth**

Made in Germany. Made by markilux. All awning fabrics are developed, manufactured and tested in our own facility in Germany. All the fabric patterns in the collection can be admired at [markilux.us](https://www.markilux.us)



Traffic white

RAL 9016



Off-white textured finish

5233



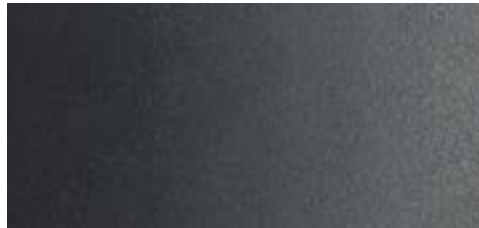
Metallic aluminum

RAL 9006



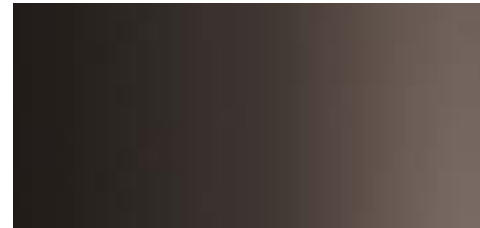
Stone grey metallic

5215



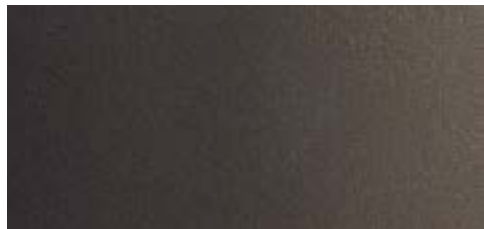
Anthracite metallic

5204



Grey brown

similar to RAL 8019



Havana brown textured finish

5229



RAL color of your choice

© RAL Bonn 2020







Sounds perfect.  
Looks better.  
**Tone in tone.**

**markilux awning colors**

The awning frame color complements and enhances the color of the fabric and creates a perfect link to the architectural surroundings. From a variety of shades of white through to the timelessly elegant anthracite, a broad range of colors is available to you. And if you want to create your own particular color scheme? No problem! We will gladly manufacture your dream awning in your own personal shade.

Our high-grade powder coating finish is guaranteed for any awning color you choose.

**Matching every architectural style and customer demand**

All markilux awning colors are available without surcharge.  
Non-standard colors can be selected on request.

Beauty lies not in size  
but in attention to detail.



Arm technology | Ease of use | Options | Technical details

# markilux arm technology.

The tension is rising.



### **Bionic tendon**

Highly durable, virtually noiseless and perfectly placed to provide optimum cover tautness. markilux developed the bionic tendon from high-tech fibres, and used nature as its inspiration to create optimum power transference. The safety and durability of the arms also impressed when it achieved more than 50,000 arm flexions in independent tests.



### **Smart control**

Arrange your own personal patio atmosphere by controlling the awning, the lighting and lots more using the technology offered by your smartphone or tablet – whether you are relaxing on your patio or away from home.



**markilux remote control**

Comfort can be so easy. Awning, shadeplus, and light, all at the touch of a button.



**markilux vibrabox**

Intelligent, sensitive and independent of the mains. The vibrabox is an inertia sensor and, depending on wind load, retracts the awning.

## markilux ease of use.

Make it easy on yourself,  
and convenient.

**Meeting the highest demands and any weather conditions**

The choice is yours: manual operation (servo-assisted on request), hard-wired motor or radio-controlled motor with remote control are all possible on most models. Or even better still, why not put your feet up and add light, wind and rain sensors to provide automatic intelligent control of your markilux designer awning or shade? You can even operate the system while you are away via smartphone or tablet.

Your markilux specialist dealer is at your disposal, should you have any questions regarding the operation of your markilux.

Availability depends on the model



#### LED Line in the cassette

Appealing, ambient light in the form of an LED Line integrated into the cassette. Reserved and understated during the day. Dazzlingly beautiful and cozy in the evening.



#### LED Spots

Under the cassette or in the front profile: LED Spots that can be pivoted and dimmed create a lovely atmosphere on your patio in the evening.



#### stretch

The perfect solution for narrow patios, recesses or balconies. Thanks to the two crossover arms even awnings in a narrow width can extend further.



#### Wall sealing profile

This slim aluminum profile closes the gap between the awning and the wall, allowing the rain to be discreetly drained off the awning.



#### Polished chrome fittings

Stylish end caps and end cap inserts in polished chrome are eye-catchers and turn your awning into personal, individualized protection against the sun.



#### Color variants and combinations

Cassettes and front profile panels are available in attractive colors and can be combined at will.



#### Coupled awning

Connecting two or more awnings together and operating them simultaneously offers even more shade. In folding-arm awnings, a special roller shade elegantly closes the gap between the two awnings.



#### **The markilux shadeplus**

Simply shut out the low-lying sun and the glances of inquisitive neighbors and enjoy the warmth of the day for even longer. An additional shade cover is lowered vertically downwards from the front profile to create a wonderfully private room outdoors. Depending on the model, it is also available with a hard-wired / radio-controlled motor.

Availability depends on the model

**markilux options.**  
More freedom.  
More free space.

#### **An awning like no other**

Your markilux designer awning, individually configured and tailored to your own personal and individual desires and preferences. Not a standard product, but perfect protection against the sun with a personal touch. Unique and special.

# markilux designer awnings

markilux MX-1  
Page 14



markilux MX-1 compact  
Page 16



markilux 6000  
Page 20



markilux 5010  
Page 22



markilux 970  
Page 24



markilux MX-3  
Page 26



Max. width × projection	275" × 172" / 700 × 437 cm	275" × 163" / 700 × 415 cm	275" × 157" / 700 × 400 cm	275" × 157" / 700 × 400 cm	236" × 118" / 600 × 300 cm 196" × 137" / 500 × 350 cm	236" × 118" / 600 × 300 cm 196" × 137" / 500 × 350 cm
Operation	Radio-controlled motor*	Radio-controlled motor *	Manual operation	Manual operation	Manual operation	Manual operation
optional			+ servo-assisted manual operation + hard-wired motor + radio-controlled motor*	+ servo-assisted manual operation + hard-wired motor + radio-controlled motor*	+ servo-assisted manual operation + hard-wired motor + radio-controlled motor*	+ servo-assisted manual operation + hard-wired motor + radio-controlled motor*
Arm technology	Bionic tendon	Bionic tendon	Bionic tendon	Bionic tendon	Bionic tendon	Bionic tendon
Fixture type	Face fixture	Face fixture	Face/top/roof	Face/top/roof	Face/top/roof	Face/top/roof
optional			+ wall sealing profile	+ wall sealing profile	+ niche	+ wall sealing profile
Options**	+ LED Line/Spots in the front profile + LED ambient lighting + LED Spots below the cassette + choose your own color combination + shadeplus/drop valance + valance	+ LED Line/Spots in the front profile + LED ambient lighting + LED Spots below the cassette + choose your own color combination + shadeplus/drop valance + valance	+ LED Spots in the front profile + end cap insert in stainless steel mesh + end cap trim in polished chrome + shadeplus/drop valance + valance + coupled awning	+ end caps front profile in polished chrome + shadeplus/drop valance + valance + coupled awning	+ LED Line in the cassette + LED Spots below the cassette + anodized front panels + shadeplus/drop valance	+ LED Line in the cassette + LED Spots below the cassette + colored front panels and end cap insert

\* Remote control, smart (app) or intelligent control possible

\*\* Some options cannot be combined



markilux 990

Page 30



196" x 118" / 500 x 300 cm

Manual operation

- + servo-assisted manual operation
- + hard-wired motor
- + radio-controlled motor\*

Bionic tendon

Face/top/roof

- + wall sealing profile

- + end cap insert in polished chrome
- + valance

markilux 3300

Page 32



275" x 157" / 700 x 400 cm

Manual operation

- + servo-assisted manual operation
- + hard-wired motor
- + radio-controlled motor\*

Bionic tendon

Face/top/roof

- + wall sealing profile
- + niche

- + valance
- + coupled awning

markilux 1600

Page 36



279" x 157" / 710 x 400 cm

Manual operation

- + servo-assisted manual operation
- + hard-wired motor
- + radio-controlled motor\*

Bionic tendon

Face/top/roof

- + wall sealing profile

- + LED Spots in the front profile
- + end caps in polished chrome
- + shadeplus/drop valance
- + valance
- + coupled awning
- + stretch

# markilux products providing wind protection and extra privacy



**markilux format** Wind protection and extra privacy | Page 38

Individual unit: max. 118" x 98" / 300 x 250 cm, can be extended

Fixture type: patio demarcation, fixed to footings, awning system element

Options: + triangular solutions, slide, panoramic window



**markilux 790** Side screen | Page 40

Extension: max. 177" / 450 cm, height: 35" - 98" / 90 - 250 cm

Operation: manual operation; Fixture type: can be fitted to a wall or in a niche

Options: + angled top edge and mobilfix

# markilux awning systems

## markilux pergola

Page 44



## markilux pergola compact

Page 46



## markilux planet

Page 50



## markilux markant

Page 52



## markilux syncra

Page 54



## markilux construct

Page 56



Max. width × projection	236" × 177", 600 × 450 cm 196" × 236", 500 × 600 cm	177" × 157", 450 × 400 cm	236"/240" × 118", 600/610 × 300 cm 196"/200" × 137", 500/510 × 350 cm	236" × 236", 600 × 600 cm (2 fields) 118" × 236", 300 × 600 cm (1 field)	Up to 645 sq. ft. depending on the awning model	Almost unlimited
Awning system	pergola tracfix cover guidance with lateral guide tracks on slim posts	pergola tracfix cover guidance with lateral guide tracks on slim posts	Awning umbrella-like system with one markilux designer awning as desired	Textile weather protection free-standing, purist in design, on four posts with integrated designer awning	Awning stand system with two posts and one/two markilux designer awnings or pergolas as desired	Frame system modular and flexible
Operation	Hard-wired motor optional + radio-controlled motor*	Hard-wired motor + radio-controlled motor*	Depending on the awning model	Radio-controlled motor*	Depending on the awning model	Depending on the awning model
Arm technology	—	—	Depending on the awning model	—	Depending on the awning model	Depending on the awning model
Fixture type	Face/top/eaves + wall sealing profile	Face/top/eaves + wall sealing profile	Free-standing on concrete foundations	Free-standing on concrete foundations or attached to a wall	Free-standing on concrete foundations or stabilization boxes	Free-standing on concrete foundations
Options**	+ LED Line/LED Spots + shadeplus/drop valance + wind protection and extra privacy + round or square posts + adjustable posts + stabilization boxes + coupled awning	+ LED Line/LED Spots + shadeplus/drop valance (manual) + wind protection and extra privacy + round or square posts + adjustable posts + stabilization boxes	Depending on the awning model + flex (335° pivoting) + shadeplus/drop valance + base plate covers	+ LED Line/LED Spots + wall sealing profile + vertical roller blinds + wind protection and extra privacy + panoramic window	Depending on the awning model + uno + flex + round or square posts + base plate covers + coupled awning	Depending on the awning model + vertical roller blinds + wind protection and extra privacy + panoramic window + round or square posts + base plate covers

\* Remote control, smart (app) or intelligent control possible

\*\* Some options cannot be combined



**The sun smiles down on an awning**

Life smiles on you under a markilux. Detailed information is available from your local markilux specialist dealer or at [markilux.us](https://www.markilux.us)

**The best under the sun. Create the most alluring shade in the world.**

markilux designer awnings are a symbiosis of innovative technology and the ultimate in quality and have received both acclaim and multiple awards. Ideas, detailed information, professional advice and all the exquisite markilux awning fabric patterns can be found in your specialist dealer's showroom and at [markilux.us](https://www.markilux.us)

[markilux.us](https://www.markilux.us)

**markilux**<sup>®</sup>  
The best under the sun